

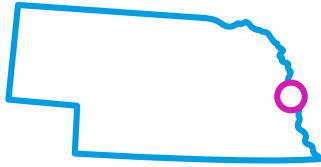
Novel Proteins for Feed Applications.

Nov 2024

 **sequence**[™] by  **Green Plains**



Green Plains By the numbers.



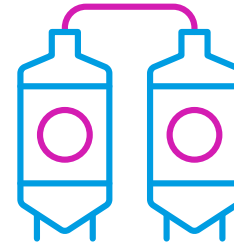
2004

formed, headquarters
in Omaha, NE USA



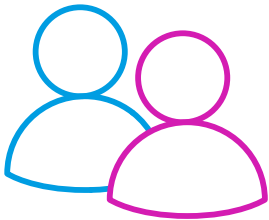
\$3.7BN

annual sales



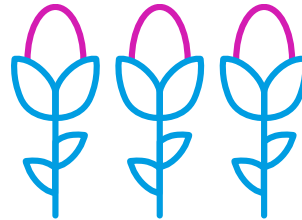
10

operating biofuel plants



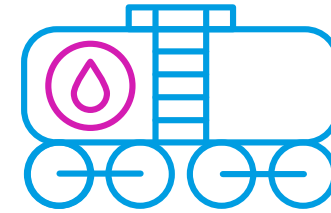
880

employees



7.6M mt

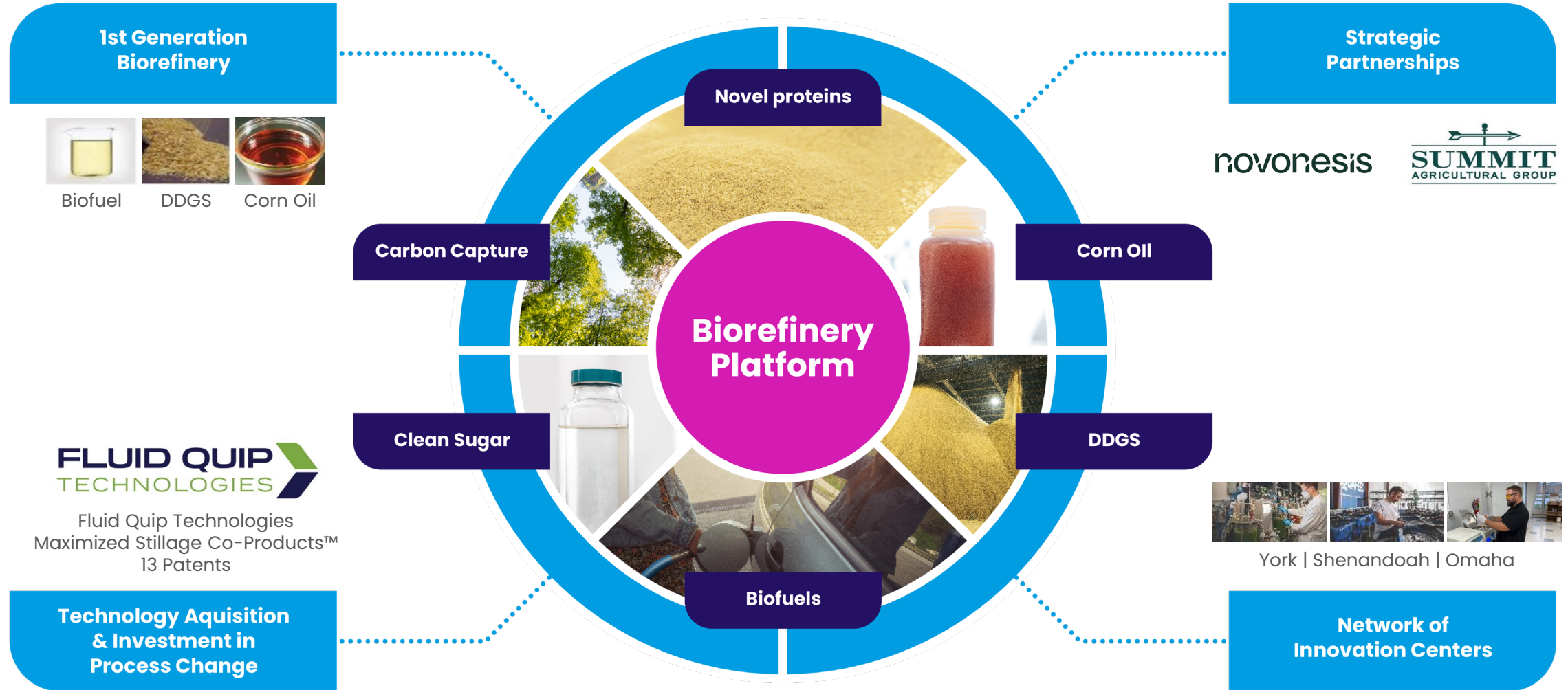
local corn
processed annually



3.3BN liters

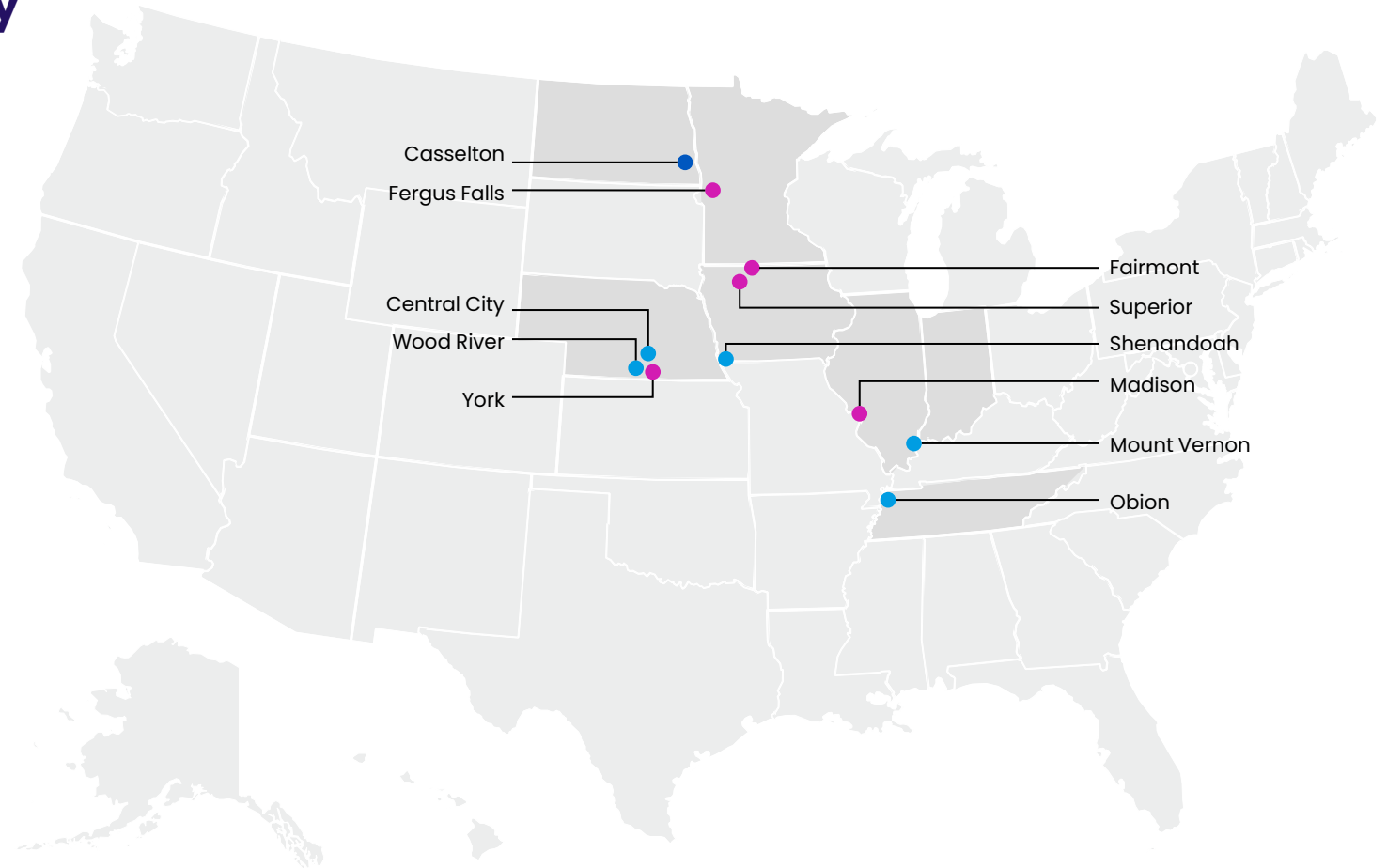
biofuel annually produced

Pivoting to the Sustainable Biorefinery Platform.



More biorefineries using MSC™ process for greater supply chain confidence.

- 365,000 ton annual capacity
- of CFP50 and Sequence



- Plants with MSC™ technology
- Plants without MSC™ technology
- JV with MSC™ technology

Areas of Research

- Protein levels 50%, 60%.... More to come
- Digestibility
- Palatability
- Disease resistance
- Growth
- Aqua species: Tilapia, Vanamei Shrimp, Eel, Rainbow Trout, Atlantic Salmon, Channel Catfish, Red Seabream, Snakehead, Bluegill, Bass
- Monogastrics: swine, broilers, companion animals
- Ruminants: digestibility

Markets

- North America
- South America
- Europe
- Africa
- Middle East
- Asia

Green Plains is recognized as a leader in sustainability.



Thank You.

Louis.Rens@gpreinc.com

Sheldon.Spratt@gpreinc.com

Steve.Craig@gpreinc.com

